

## Lizzi Brill

November 22, 2013 - January 27, 2021

Lizzi

There are no words in any language which express the feelings our family have for Lizzi. Lizzi was born with chronic kidney failure. She was given four months to live. Lizzi survived for six years longer than the time she was given.

Every week she had to have fluids. During this time she bonded with her care givers.

We'll never forget how you picked us out to be your family. You were bought out and within seconds. You were sleeping on your forever mommy's chest.

She was our daughter, peacemaker, emotional support, kissy giver, and daddy's little girl.

Through her illness, she always gave all her love each day to her family. Lizzi worried more about our feelings and needs than her own needs.

How do you sum up a life which was way too short?

She showed everyday how we are supposed to love each other. Even in death Lizzi is still teaching her daddy to become the man he wants to be.

Love seems such a confining word for our little girl. It's the only word which we have.

Love always Lizzi, forever and ever.

Lizzi

Elizabeth Bennet Brill

# Tribute Wall



“ *Lizzi was always there with her love when you needed her the most. She help me through some really dark days during my illness by being there along with her brother Nigel to brighten my day. My deepest sympathies to her mommy and daddy on the lost of your baby girl.* ”

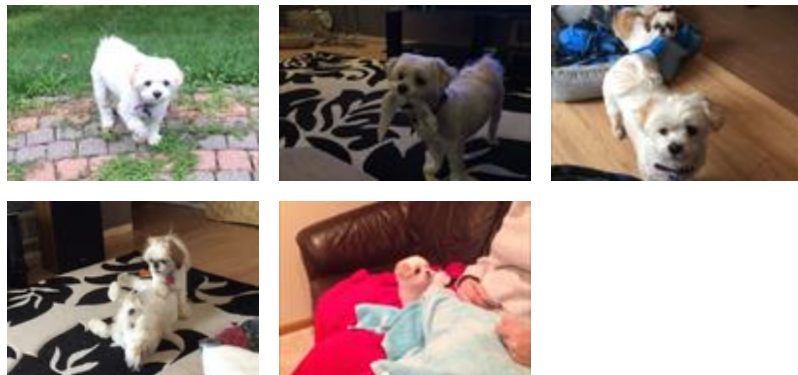


---

**Dana Cunningham** - February 12, 2021 at 04:31 PM



“ *10 files added to the album Lizzi* ”



---

**Michael Brill** - February 12, 2021 at 01:29 PM